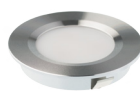
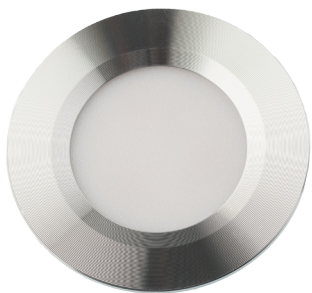


RON-S300

SPECIFICATION



Power: 3 watts
 Voltage: 24 VDC
 Lumens: 180 to 200
 Beam angle: 120°
 Available white: warm white, neutral white, cold white, warm white-RGB, neutral white-RGB or cold white-RGB
 Finish: white, aluminum or black
 Lifespend: 30 000 hours
 Wire length: 24" (600 mm)
 Ceilling cutout: 2 1/2" (64 mm)
 DC connector power feed
 Dimmable: yes



To order

RON	-	S300	-	BL	-	BC
Puck serie		300 serie		BL: White AL: Aluminum N: Black		BC: Warm white (3000K) BN: Neutral white (4000K) *BF: Cold white (5000K) BC-RVB: Warm white-RGB (3000K) BN-RVB: Neutral white-RGB (4000K) *BF-RVB: Cold white-RGB (5000K)

Available accessories

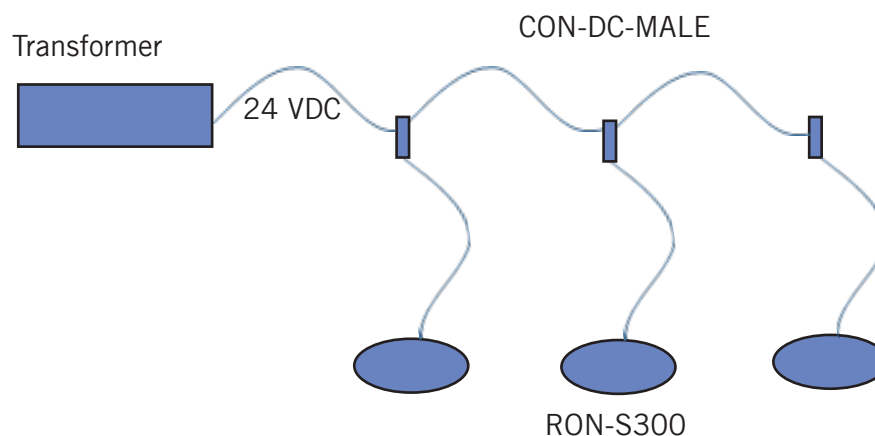
RON	-	S300	-	BL	-	ANN
Puck light		300 serie		BL: White AL: Aluminum N: Black		ANN: Surface mount ring

*Special order, allow 4 to 6 weeks for delivery

PRODUCT DIMENSIONS

Product code	Diameter	Height	Ceilling cutout
RON-S300	2 3/4" (70 mm)	7/16" (11 mm)	2 1/2" (64 mm)

CONNECTION DIAGRAM



For connection diagram in RGB, contact your adviser.

INTENDED USE

The RON-S300 series puck light are ideal for countertop lighting or for recessing or integrating into any type of cabinets. Their 120 degrees beam provides a wide illumination over the entire surface. The S300 series can be recessed or surface mounted, as needed.

Their white, aluminum or black finish and colour temperature in warm or neutral white harmonize perfectly with any decor.

The RON-S300-BX-RVB serie allows fixed white lighting but also creates colorful decor.

WARNING

1. Install this product in accordance with the applicable electrical code. This product is designed for installation by a qualified person or electrician.
2. This product is designed to operate with a 24 VDC Class 2 transformer. Never connect directly to a high-voltage source.
3. This product is designed for indoor use and is not protected from moisture.
4. This product must be connected using the connectors built into the product.

WARRANTY

This product is warranted against manufacturing defects for a period of three (3) years from the date of purchase and does not include the other products shown on this sheet, if any. For a complete description of the warranty, visit www.innovadel.com or contact our technical support. Any modification, alteration, improper installation of the product, or cutting of connectors, will void the warranty.